

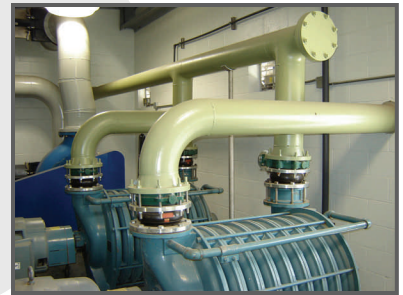
## DESIGN-BUILD AEROBIC TREATMENT PLANT

ISC constructed a new design build 1.075 MGD MLE wastewater pretreatment system for Darling International at their Wahoo, Nebraska rendering facility.

Two ninety foot diameter glass lined steel tanks were relocated to the project site from an existing east coast facility.

The aerobic 2 stage High Rate Activated Sludge system was constructed for high efficiency removal of BOD, TSS, total nitrogen and oil/grease created by the protein rendering operation.

The plant wastewater effluent is currently discharging to the Silver Creek.



## INTEGRAL COMPONENTS

- 2 90 Dia Glass Lined Bolted Tanks
- Aeration System
- Lift Station
- Anoxic Reactor
- Nitrification Reactor
- Dissolved Air Flotation Cell
- Belt Press
- Chemical Feed System
- Chlorination System
- De-chlorination System
- Equipment Building
- Laboratory



**“Your satisfaction is our core motivation.”**